



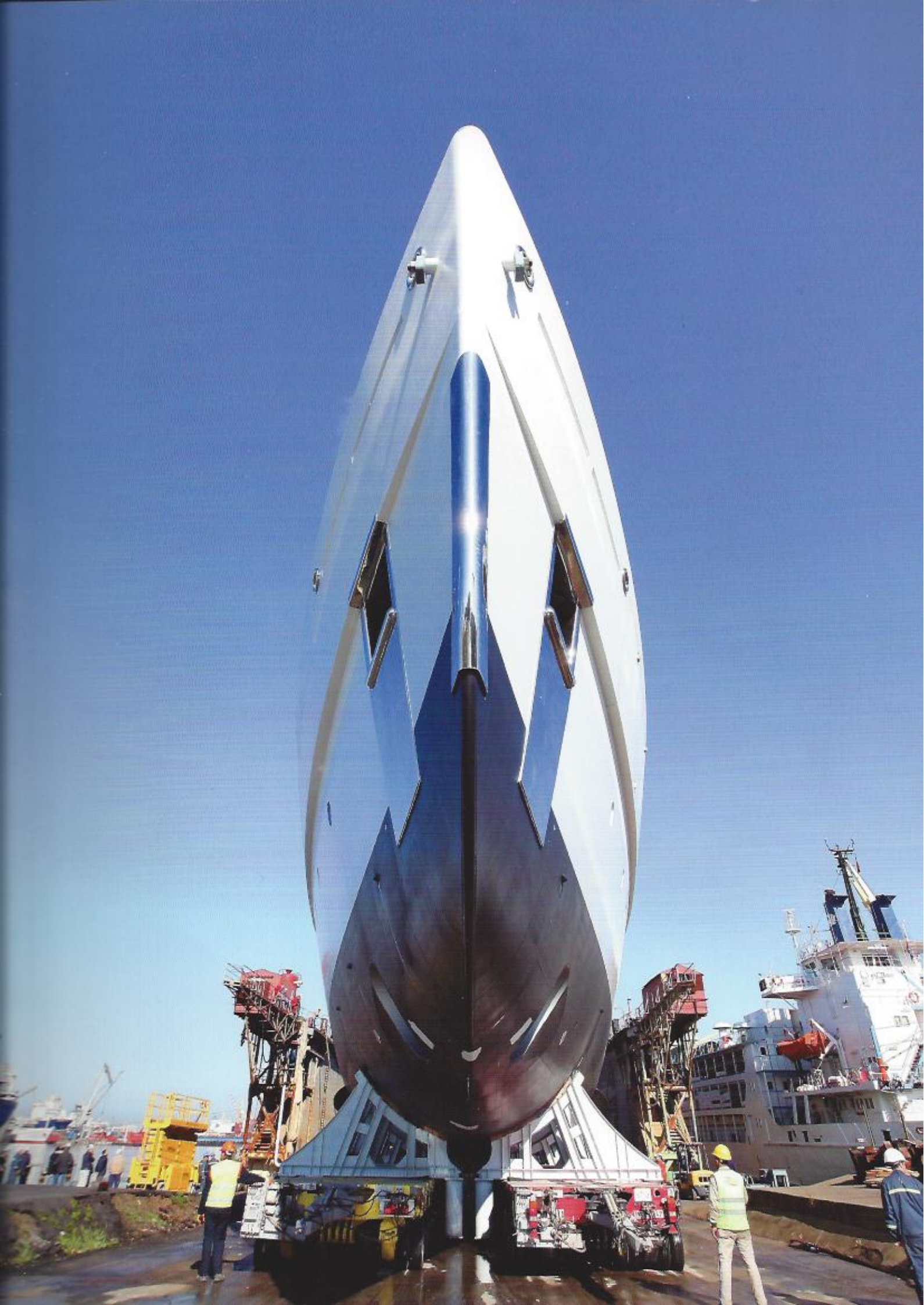
# 73metres

A special supplement on the transfer of the hull of the third Picchiotti Vitruvius® series motor yacht built to date

text by Clare Mahon, images by Levent Kugu, Giuliano Sargentini

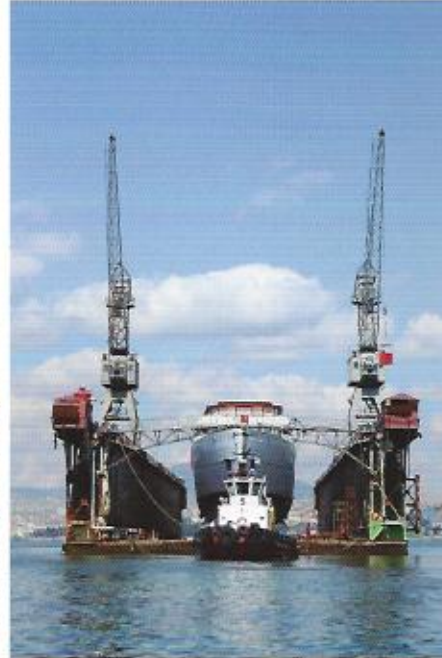


The hull and superstructure of the new 73m Picchiotti motor yacht from the Vitruvius® series were constructed at the Perini Istanbul shipyard in Tuzla, Turkey. The second largest hull after the 88m *The Maltese Falcon* built to date by the Perini Navi Group, this is the third motor yacht and the flagship of the Picchiotti Vitruvius® series constructed in collaboration with Vitruvius Ltd and Philippe Briand.



## Turkey

The Perini Istanbul shipyard in Tuzla, Turkey is an excellent base for the primary construction of Perini Navi Group yachts. With a pool of highly skilled workers and an enviable infrastructure, this shipyard can handle the most delicate and complicated construction jobs. The hull and superstructure of the 73m MY C2189 were cut, turned, welded and assembled there then carefully transferred from construction shed to dry dock for her technical launching.

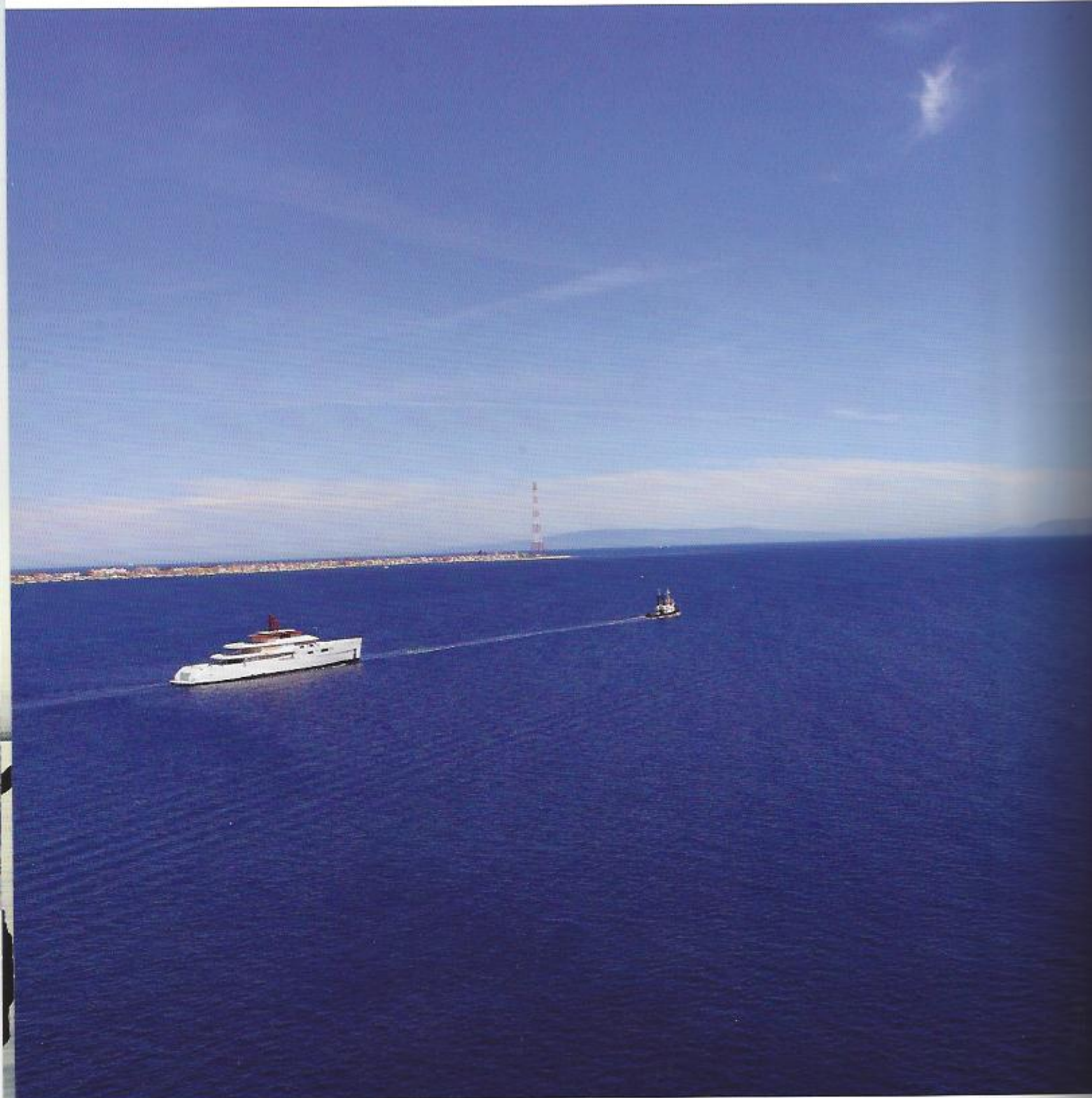


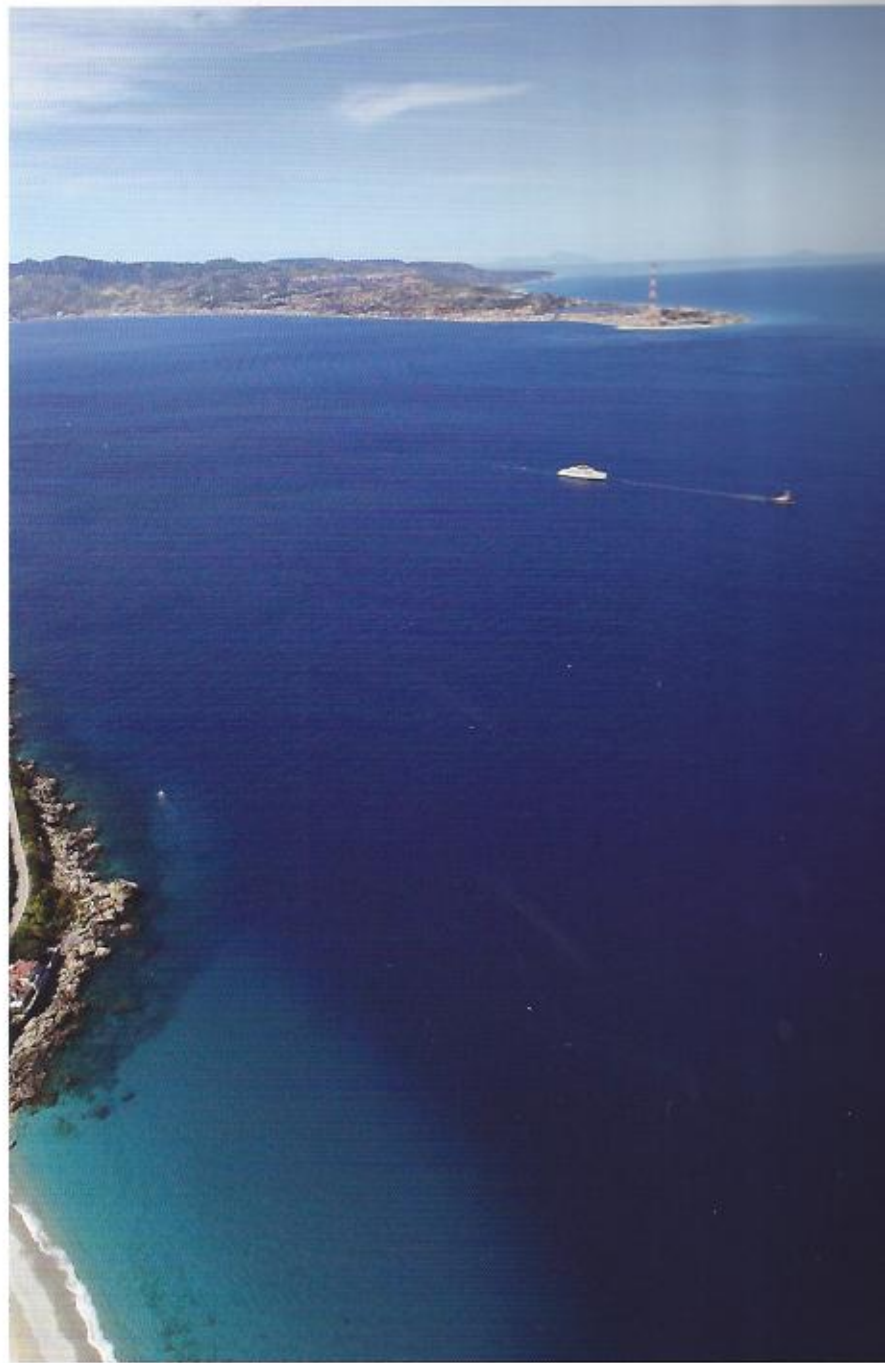
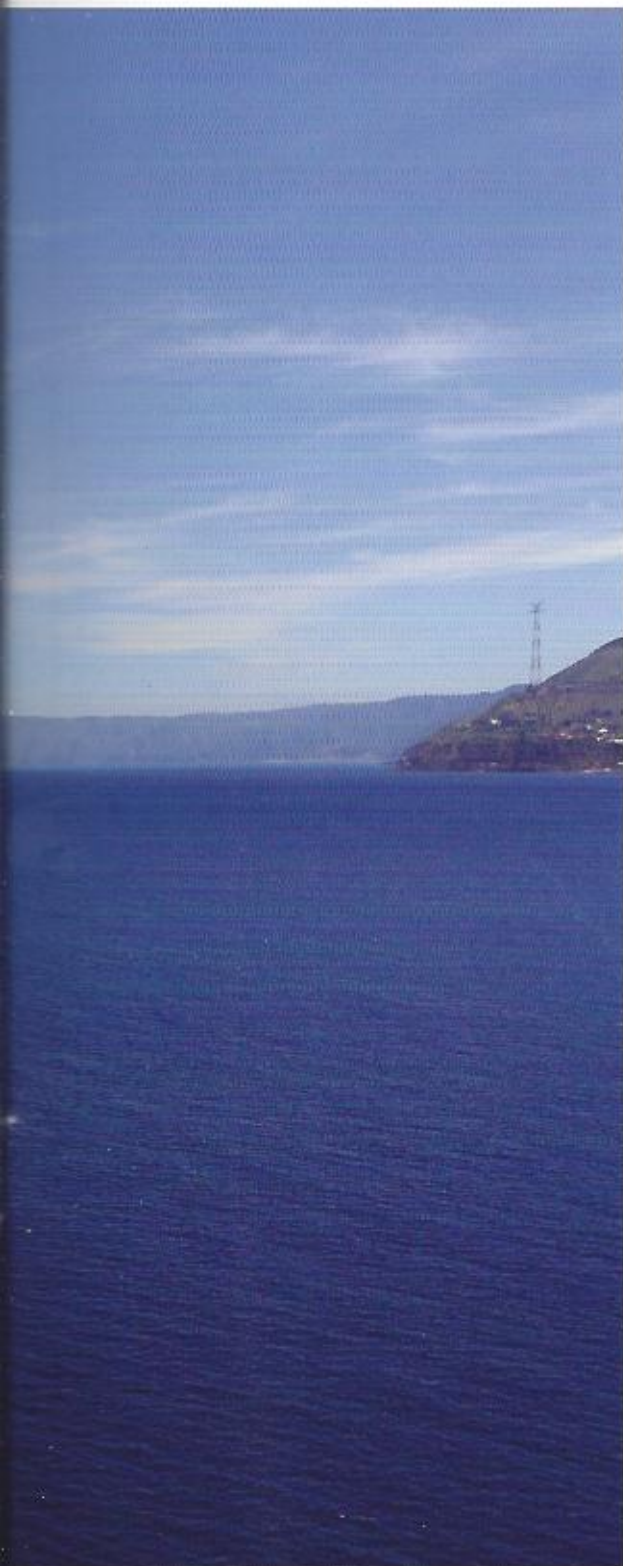
A bit of nationalistic pride was more than justified by the scale of the job and the quality of the work done. After a joyful and heartfelt ceremony for the technical launching, the hull was prepared for towing to the Perini Navi Group's Picchiotti shipyard in La Spezia, Italy for finishing and furnishing.

12SPECIALE 73m

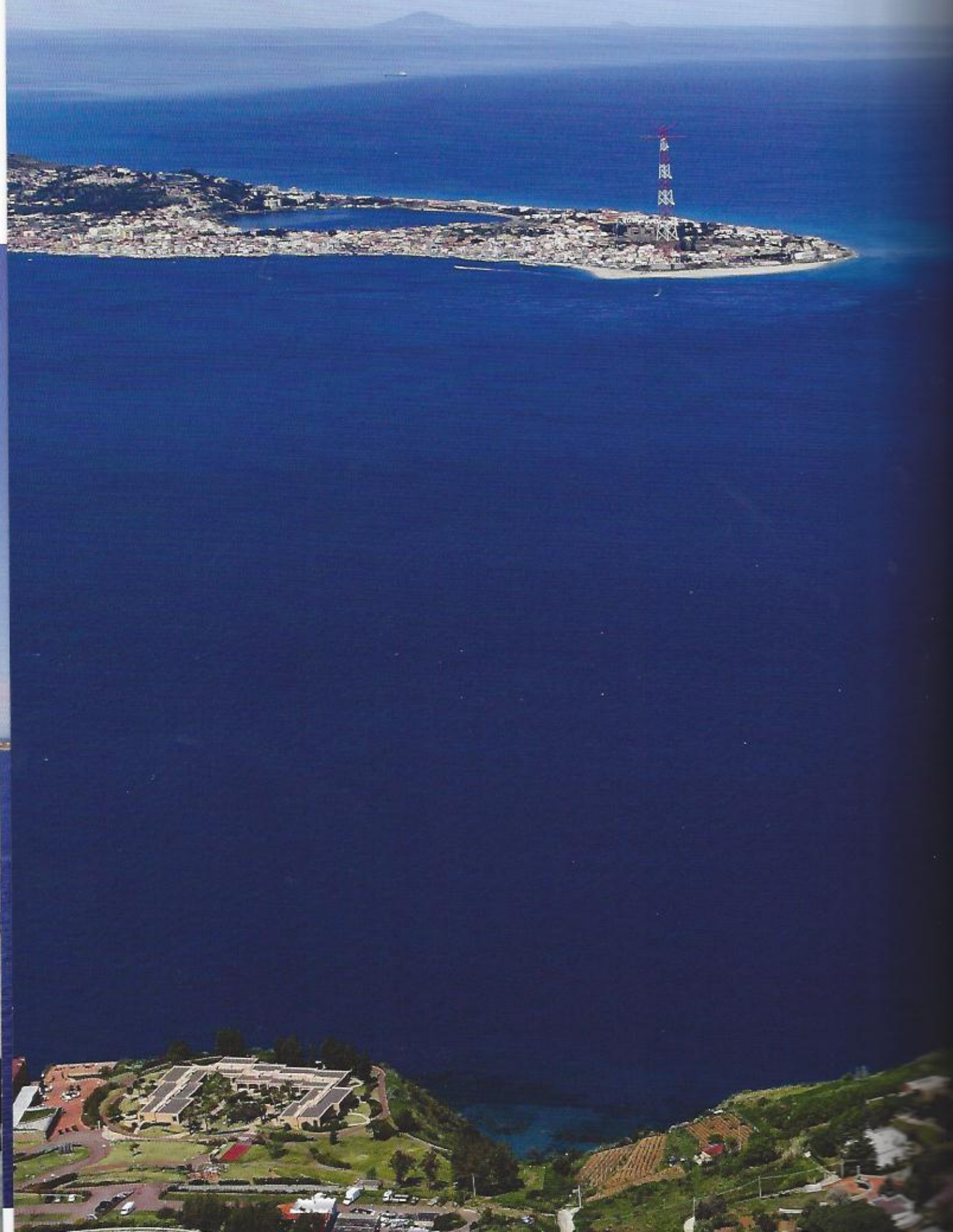
### Strait of Messina

On her month-long trip from Istanbul to La Spezia the 73m hull number C2189 passed through lands of myth and legend. The Strait of Messina connects the Ionian with the Tyrrhenian Seas and is just over 5 km wide at its narrowest point. When her own propulsion system is mounted this yacht will have a state-of-the-art electric/diesel system run on two Azipod engines and a maximum cruising speed of 16.5 knots. Her range at 12 knots will be an incredible 7,500 nautical miles. The perfect yacht for owners wishing to explore the far reaches of the world, the Picchiotti 73m of the Vitruvius® series is equally suited to Mediterranean or Caribbean cruising.





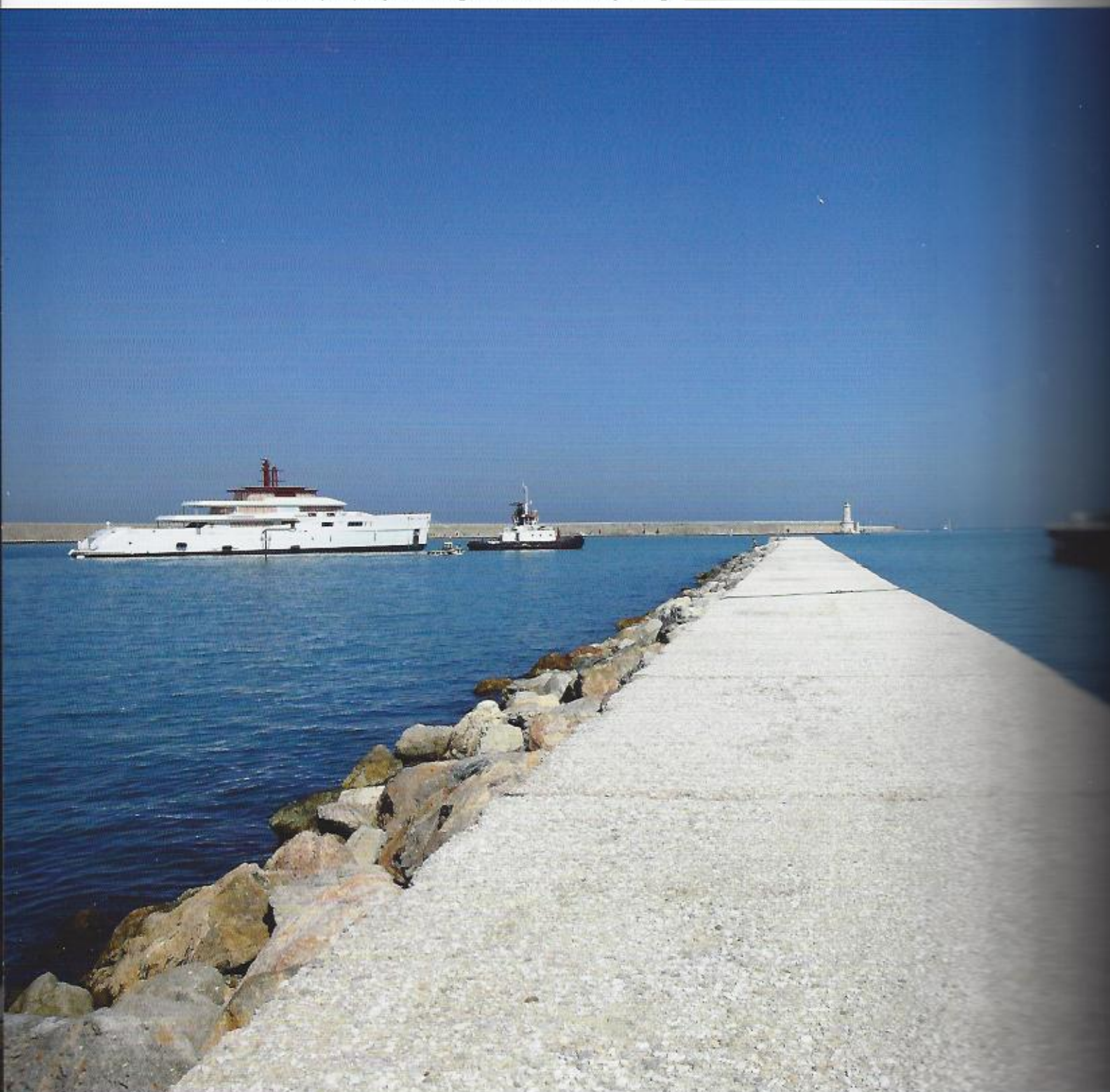
12SPECIALE 73m



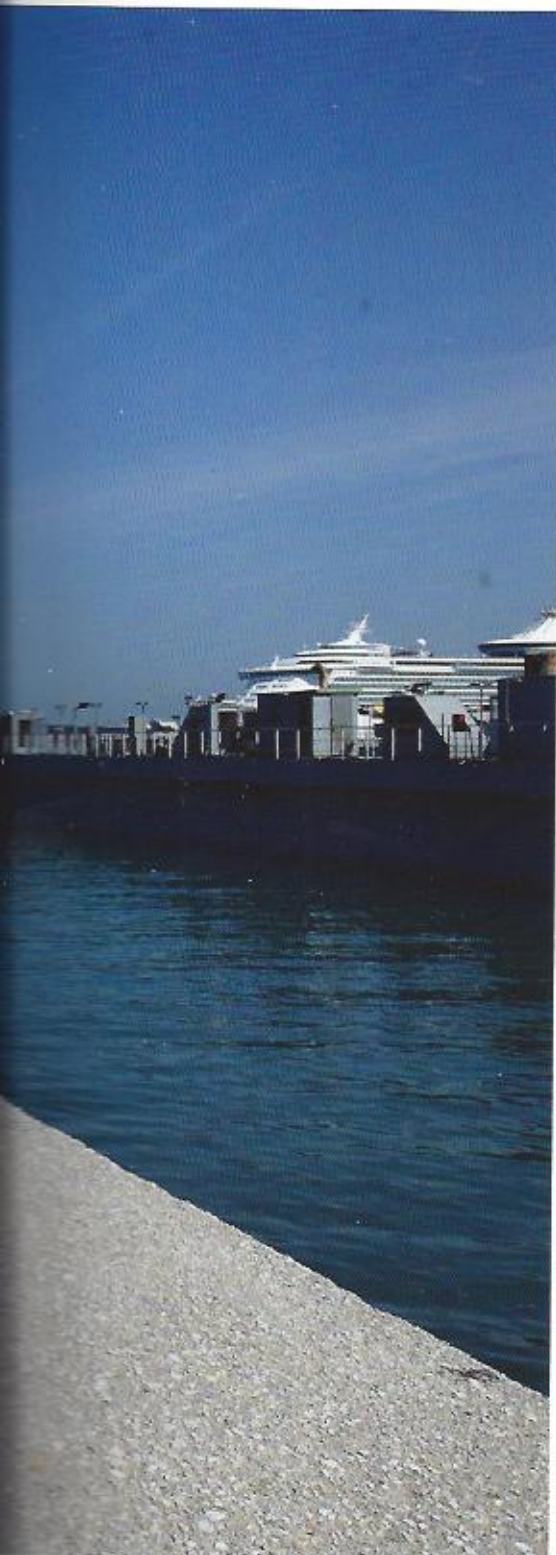


## Leghorn

Heads turned when hull C2189 was towed into the port of Leghorn for her first stop in Italy where she cleared customs. MY C2189 has been created, like MY *Exuma* 50m and MY *Galileo G* 55m before her, for those who want to cruise safely in comfort and total autonomy. This new generation of motor yachts has a characteristic innovative hull and superstructure shape that owes much to sailing yacht naval architecture. Thanks to the dynamic efficiency of the hull and appendages, these yachts can travel for very long distances with limited fuel consumption, truly broadening the horizons of motor yachting.



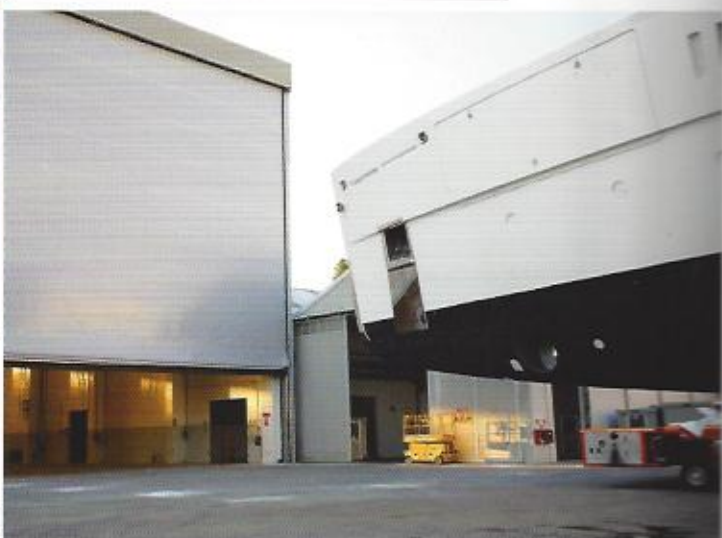
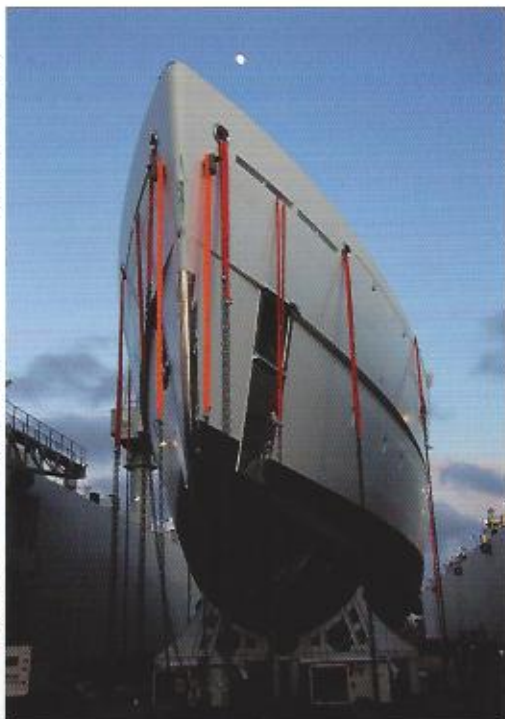




A new concept for spaces leaves ample room for storage of exploration and discovery equipment. Side gull-wing doors and dedicated cranes give easy access to two tenders, a rescue boat, two motor scooters, kayaks and diving equipment. This yacht is designed and equipped to reach the most beautiful and far-flung places in the world and for all kinds of sport and exploration.

### La Spezia

Hull C2189 reached the Picchiotti shipyard in La Spezia in early May. Shortly thereafter the delicate operation of lifting her out of the water and transferring her into the construction shed commenced. The Perini Navi Group's Picchiotti shipyard can undertake a wide variety of shipbuilding projects ranging from complete construction to fitting and furnishing to refits on all types of yachts, both modern and antique, sailing and motor.



Hull C2189 will occupy an entire shed at the Picchiotti shipyard for outfitting until delivery, scheduled for 2013.





## Interiors

The motor yacht, current flagship of the Picchiotti Vitruvius® family, has ample and elegant interior spaces designed by the French designer Rémi Tessier. Features include extensive and spacious social areas for lounging and dining, a sushi bar, comfortable en-suite cabins and many other amenities. Time spent aboard this yacht will be truly relaxing and memorable.





## Exteriors

With her sleek looks, the 73m is ideal for cruising in the Caribbean or in the Mediterranean. C2189 has five bridges the uppermost of which - also called the Wellness Deck - will have an area dedicated entirely to wellness, fitness and personal health. This area will be equipped with a gym, sauna, steam bath and Jacuzzi. This 73m beauty is scheduled for launching in 2013 when she will join the 50m *Exuma* and the 55m Ice Class *Galileo G* in their world explorations. These magnificent Picchiotti Vitruvius® Series yachts have already established the Perini Navi Group's reputation for constructing elegant, environmentally friendly motor yachts that can travel great distances in efficiency.



## Azipod® CO

bringing the benefits of podded propulsion

The MY Picchiotti Vitruvius® Explorer 73m will feature two Azipod® CO propulsion units. Azipod® CO is an azimuthing propulsion system which provides high overall propulsion efficiency and maneuverability for modern, environmentally friendly ships.

A highly developed module-based design makes Azipod CO easy to install, use and maintain.

This, in turn, ensures high quality throughout the entire product lifespan and provides low lifecycle costs. Azipod CO also brings unique advantages such as high reliability, passenger comfort and environmental friendliness.

### *Azipod® CO Benefits*

#### **Economical, Long-Range Operation**

- Power Plant flexibility
- High power factor
- Speed control of fixed-pitch propeller
- Hydrodynamic and (direct) transmission efficiency
- Efficient cooling

#### **Safe Operation**

- High maneuverability
- Immediate availability of thrust – forward and reverse
- Excellent crash stop performance
- Power Plant availability

#### **Low Maintenance**

- Prime mover engines operating close to their optimum
- Absence of gears, hydraulics, external cooling
- Simple construction

#### **Passenger Comfort**

- Minimum levels of noise and vibration
- Constant-speed prime mover engines on resilient mountings
- Low cavitation and pressure pulses
- Absence of gears and high-pressure hydraulics
- Electric steering
- DTC Power Control

#### **Environmental Friendliness**

- Low NOx emissions
- Low oil consumption

#### **Efficient Installation**

- Modular construction
  - Low n° of components
  - No shaft alignment
- Advantages in design of structural stiffness and insulation.